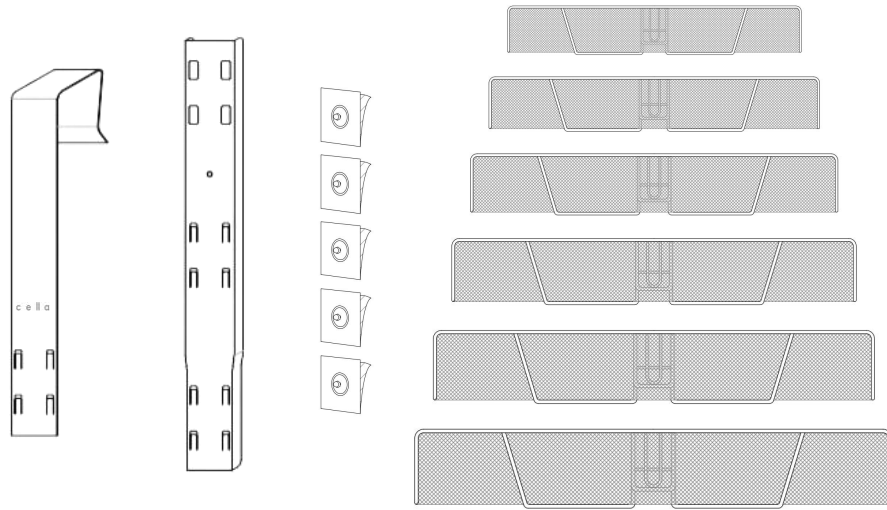


cella

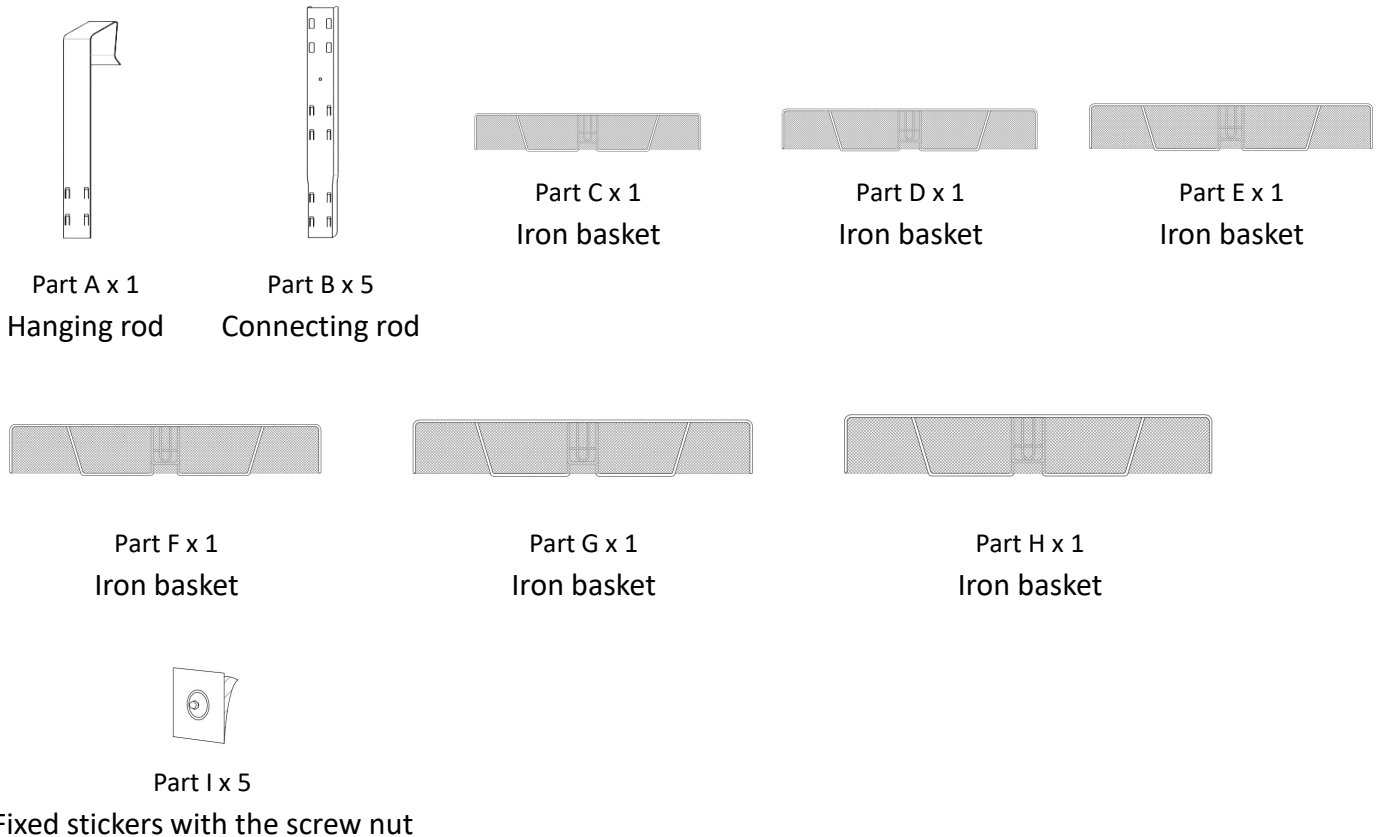
Over the Door 6-Basket Storage Rack

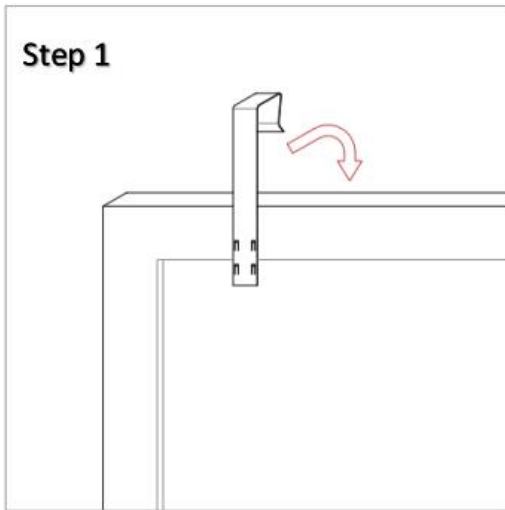


Contents:

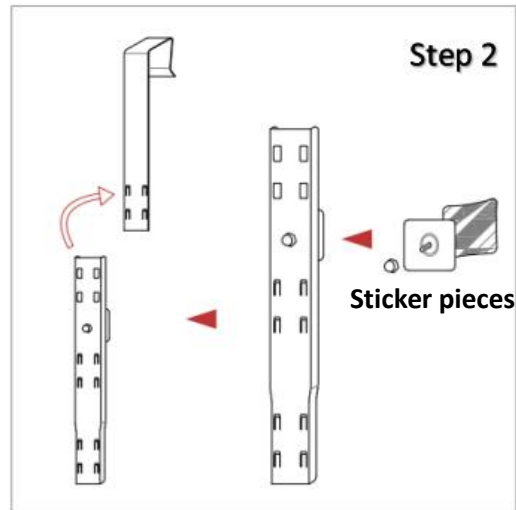
Over the Door 6-Basket Storage Rack: 78 1/4 * 16 1/2 * 6 1/4 inch(Including 1 hanging rod, 5 connecting rods, 6 baskets of different sizes, and 5 fixed stickers.)

Installation steps and diagrams:

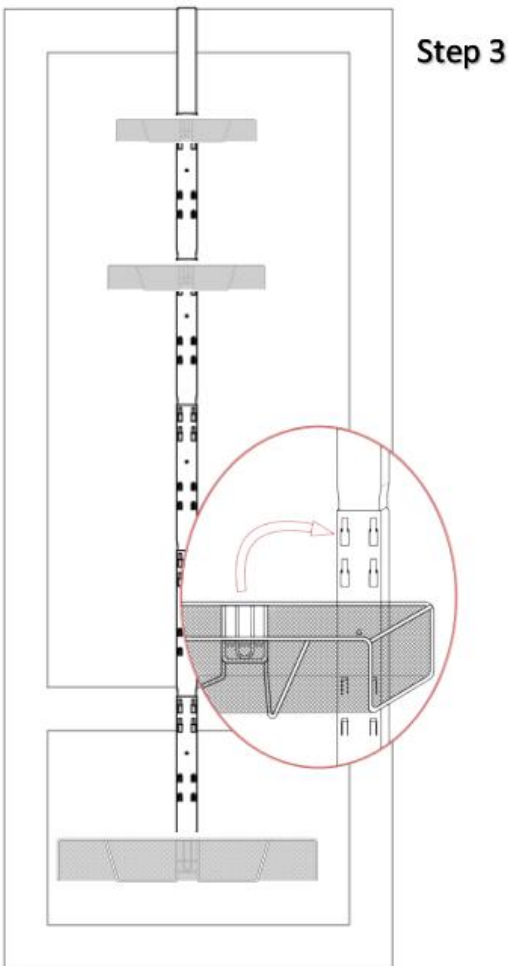




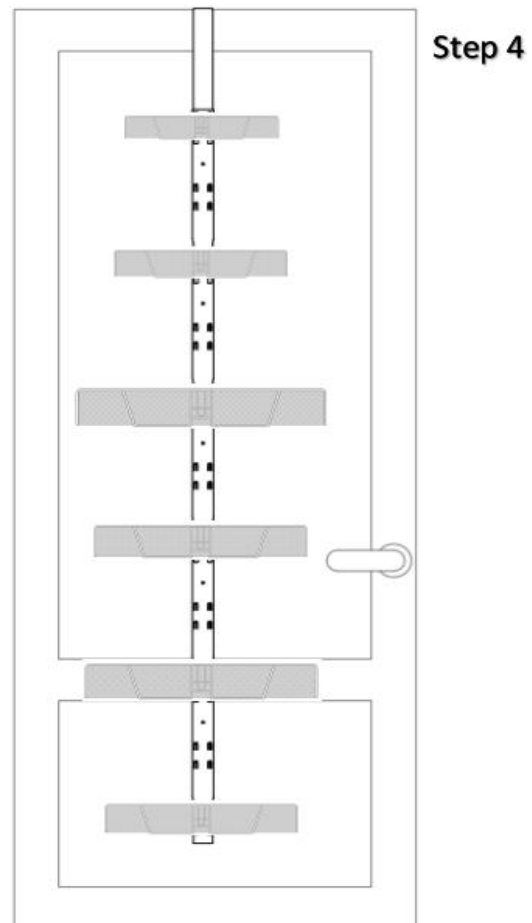
Step 1: Hang the hanging rod (Part A) at the top of the door.



Step 2: Connect the hanging rod (Part A) to the connecting rod (Part B) first, and then fix it with screws and nuts to connect to the connecting rod (Part A). Sticker pieces (Part I) at the back of rod.



Step 3: After fixing the hanging rod (Part A) and connecting rod (Part B) to the door, hang each basket into the slot on the connecting rod (Part B).



Step 4: Baskets (Part C-H) of different sizes can be placed in different places, and it is recommended to arrange them from small to large.

Note:

*The weight load of each basket can reach 20 lbs.

*Please wipe clean with a soft cloth before use, and be careful not to damage the furniture during installation.