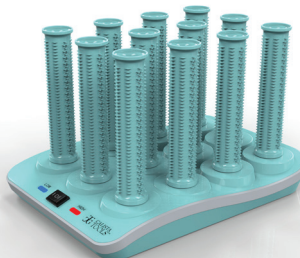
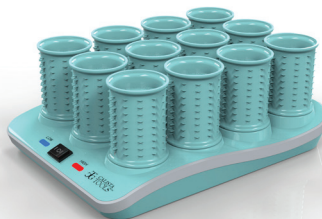


# *W*HOT *Wavers*™ HEATED ROLLERS

BODY, WAVE  
& CURL.  
LESS TIME.  
LESS EFFORT.

**TG** CALISTA  
TOOLS™  
NOURISH & STRENGTHEN WITH STYLE



# IMPORTANT SAFETY INSTRUCTIONS

READ ALL INSTRUCTIONS, WARNINGS, AND PRECAUTIONS COMPLETELY AND CAREFULLY BEFORE USE.

Save these instructions in an easily accessible place for future use.

When using electrical appliances, especially when children are present, always follow basic safety precautions, including the following:

## KEEP AWAY FROM WATER

**DANGER** – As with most electrical appliances, electrical parts are electrically live even when the switch is in the “OFF” position.

### TO REDUCE THE RISK OF SERIOUS INJURY BY ELECTRIC SHOCK;

- ALWAYS UNPLUG THE APPLIANCE IMMEDIATELY AFTER USING.
- NEVER USE WHILE BATHING.
- DO NOT PLACE OR STORE THE APPLIANCE NEAR WATER WHERE IT CAN FALL OR BE PULLED INTO A BATH OR SINK.
- DO NOT PLACE OR DROP THE APPLIANCE INTO WATER OR ANY OTHER LIQUID.
- IF THE APPLIANCE FALLS INTO WATER UNPLUG IT IMMEDIATELY. DO NOT REACH INTO THE WATER.

## WARNING

To reduce the risk of burns, electrocution, fire, or injury to persons:

1. DO NOT USE THIS APPLIANCE IF IT HAS A DAMAGED/LOOSE CORD OR PLUG, IF IT IS NOT WORKING PROPERLY, IF IT HAS BEEN DROPPED OR DAMAGED, OR DROPPED INTO WATER. RETURN THE APPLIANCE TO A SERVICE CENTER FOR EXAMINATION AND REPAIR.
2. ONLY USE THE APPLIANCE WITH AN ELECTRICAL OUTLET OF AC 120V.
3. DO NOT USE A VOLTAGE CONVERTER.
4. AVOID MORE THAN ONE CABLE TO A PLUG OR THE USE OF AN EXTENSION CORD.
5. NEVER LEAVE APPLIANCE UNATTENDED WHEN PLUGGED IN.
6. DO NOT PULL, TWIST, OR WRAP THE POWER CORD AROUND THE APPLIANCE.
7. THIS APPLIANCE SHOULD NOT BE USED BY, ON, OR NEAR CHILDREN OR INDIVIDUALS WITH CERTAIN DISABILITIES.
8. KEEP AWAY FROM CHILDREN.
9. DO NOT HANDLE THE APPLIANCE OR THE POWER CORD AND PLUG WITH WET HANDS-THIS MAY CAUSE ELECTRIC SHOCK.
10. KEEP THE POWER CORD AWAY FROM HEATED SURFACES.
11. USE THIS APPLIANCE ONLY FOR ITS INTENDED USE, AS DESCRIBED IN THIS MANUAL. DO NOT USE ATTACHMENTS NOT RECOMMENDED BY THE MANUFACTURER.

# IMPORTANT SAFETY INSTRUCTIONS

12. DO NOT USE OUTDOORS OR OPERATE WHERE AEROSOL (SPRAY) PRODUCTS ARE BEING USED OR WHERE OXYGEN IS BEING ADMINISTERED.
13. THIS APPLIANCE IS VERY HOT WHEN IN USE. DO NOT LET EYES OR BARE SKIN TOUCH THE HEATED SURFACES.
14. DO NOT TOUCH THE POSTS THAT HOLD THE CURLERS. THEY ARE HOT.

## CAUTION

To avoid injury to persons and/or material items:

- When inserting or removing the power plug to/from an outlet, hold the plug firmly to keep the cable from peeling. Do not pull on the cord to remove the plug.
- Stop using immediately if you smell an offensive odor. If ignored, it is possible to cause fire and other accidents.
- This appliance is not a toy and should not be played with by young children.
- Stop use of the appliance and pull out the power cord when there is an earthquake or thunder.
- Never drop or insert an object into any opening.
- Never use while sleeping.
- Pull out the power cord when the electric current is cut off. If not, it can cause fire.
- Do not attempt to repair, overhaul, or try to reconstruct the appliance, in case it causes electric shock, malfunction, or accidents.
- Do not attempt to clean or wipe the appliance without removing the plug from an outlet. Make sure that the appliance has cooled down if recently used.
- Do not keep this appliance in a humid place such as a bathroom in case it causes malfunction.
- If the supply cord is damaged, it must be replaced by the manufacturer, its service agent or similarly qualified persons in order to avoid a hazard.

# SAVE THESE INSTRUCTIONS

## OPERATING INSTRUCTIONS

This appliance is intended for home use. Use on Alternating Current (60Hz) only. Designed to operate at 120VAC. This appliance has a polarized plug (one blade is wider than the other). As a safety feature, this plug will fit into a polarized outlet only one way. If the plug does not fit fully into the outlet, reverse the plug. If it still does not fit, contact a qualified electrician. Do not attempt to defeat this safety feature.

# IMPORTANT SAFETY INSTRUCTIONS

1. Plug the appliance into an electrical outlet of AC 120V.
2. Push down the ON/OFF switch to the left for Low Heat setting or to the right for High Heat setting to turn the appliance on.
3. The indicator light will turn on when the appliance is switched on.
4. To turn the appliance off, push down the ON/OFF switch to the center "OFF" position. Verify that the appliance is off by checking to see if the indicator light is off.
5. Unplug immediately after use and make sure the appliance has cooled down before storing the appliance in a safe place away from the reach of children.

## USER MAINTENANCE AND CARE

Your appliance is virtually maintenance-free, but proper care can insure optimum performance and extend the life of your appliance.

1. Unplug the appliance and allow it to cool thoroughly before attempting any cleaning.
2. After each use, wipe the plates with a clean, soft cloth slightly dampened with water.
3. The body of the appliance can also be cleaned with a clean, soft cloth slightly dampened with water, as necessary.

## USER MAINTENANCE INSTRUCTIONS

### MAINTENANCE

Your appliance is virtually maintenance free. No lubrication is needed. Keep surfaces clean and free of dust, dirt, and hair spray. If cleaning becomes necessary, unplug the appliance from the power source and wipe the exterior with a damp cloth. If the cord becomes twisted, untwist prior to plugging into an electrical outlet.

**WARNING:** If any malfunction occurs, do not attempt to repair. Immediately return the Hot Wavers to a service center for repair. Unqualified repair work could lead to hazardous conditions for the user and will void any applicable warranty.

### STORAGE

When not in use, unplug appliance. Allow appliance to cool down completely before storage. Store out of reach of children in a safe, dry location. Do not wrap the cord around the Hot Wavers, as this will cause damage to the cord.

### CARE WARNING

- Do not use any abrasive cleaners or materials on the wavers as this will scratch and damage the wavers surface, which is not covered by warranty.
- Do not wipe the appliance with thinner, benzene, gasoline, lamp oil, lighter fluid, other solvents, or chemicals as it may cause accidents and/or malfunctions.

# **Body, Wave & Curl. Less Time. Less Effort.**

**Calista Tools Hot Wavers with Fusion Heat helps to add body, wave and curl to your hair in less time.**

The Hot Waver's HIGH/LOW setting is unique to all other hot rollers. Each Hot Waver roller fully heats in about 5 minutes and stays heated for up to 20 minutes.

# Using Your Hot Wavers

Read All Instructions Before Use.

1. Remove Wavers from the travel pouch.  
Do Not Use Product in the pouch.
2. Plug in the charger stand.
3. Place the Waver onto the charger. Do not attach any objects, such as hair pins or clips to the Waver.
4. Select a heat setting, High or Low, to turn on the charger stand.
5. Wavers are ready to use when the BLACK temp indicator (located on the top center of the Waver) turns RED (for LOW setting) or turns WHITE (for HIGH setting), approximately 5 minutes.
6. Unplug after use.

# Styling With Your Hot Wavers

1. Brush hair completely.
2. Separate hair into approximately a one-inch-wide and two-inch-long section.
3. Place the Waver towards the ends of the hair section.
4. Roll upward until the entire section of hair is wrapped around the Waver.
5. Secure with clip provided and let set for 5 to 20 minutes.
6. Remove the Wavers by removing the clips and gently letting each curl unravel.
7. After hair cools down, style as desired.  
(Spray with extra-hold hair spray to help prolong the life of your curls).

## CARING FOR YOUR HOT WAVERS

- Make sure to unplug the cord and allow to cool before cleaning.
- To clean the Wavers and the charger stand, wipe with a dry towel. Do not use any detergents as it will damage the product.

Hot Wavers brought to you by  
Calista Tools, a company committed to  
nourishing and strengthening hair with style.



Read All Instructions Before Use. Learn more ways  
to style your hair at [calistatools.com](http://calistatools.com).

© 2014 Calista Tools, LLC. All rights reserved.  
Distributed by Tristar Products, Inc. • Fairfield, NJ 07004  
973-287-5100

HW\_IB\_TP\_ENG\_V2\_140801