

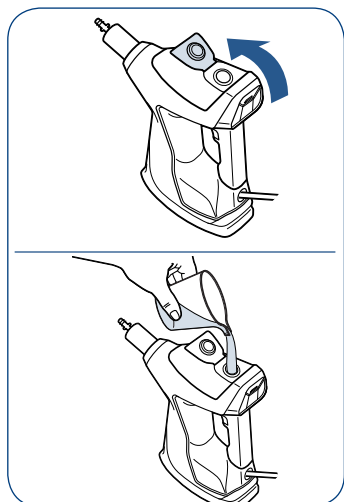


POWERFRESH[®] SLIM STEAM MOP

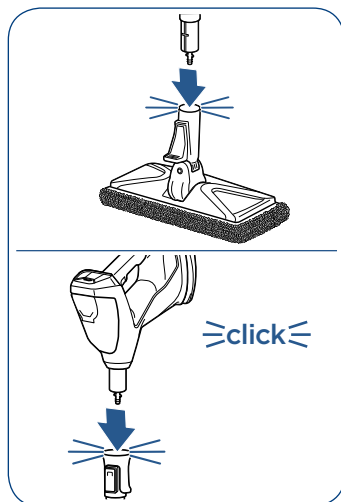
Quick Start Usage Instructions

WARNING

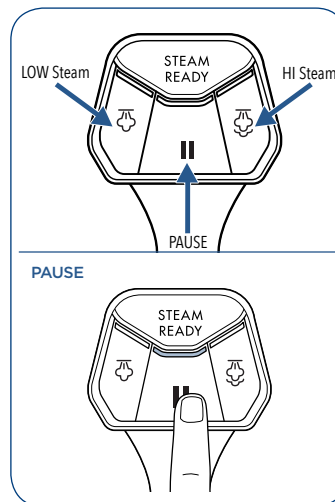
Refer to the enclosed user guide for complete instructions and important safety notices.



1. Locate the clean water tank on the front of the Handheld Pod and fill it with distilled or demineralized water using the water cup.



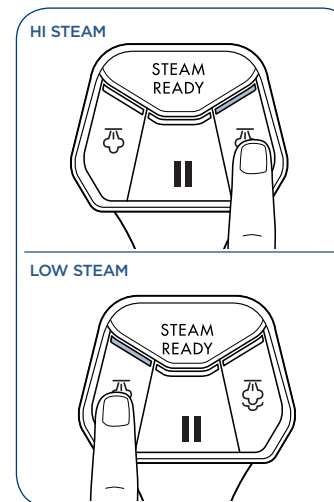
2. Insert the Extension Wand into the Mop Pad Foot until you hear a click. Then, insert the Handheld Pod into the top of the Extension Wand until you hear it click into place.



3. Plug machine in and wait until the STEAM READY light turns to a solid light. This could take up to a minute for it to be ready for use.

Press PAUSE when you want to stop the machine from steaming.

NOTE: Upon first use of the steam mop or first use after refilling the water tank, the pump may make a “knocking” sound, indicating it is priming the machine.

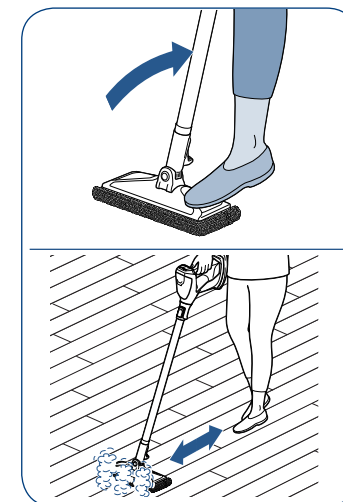


4. Depending on cleaning needs, select HI STEAM or LOW STEAM.

HI STEAM is for cleaning durable floors or sticky messes.

LOW STEAM is for delicate floors or for light, everyday cleaning.

Press PAUSE when you want to stop the machine from steaming.



5. Step on the side of the foot to recline the body of the machine. Then, push the trigger underneath the handle of the Handheld Pod to release steam and begin cleaning.

WARNING

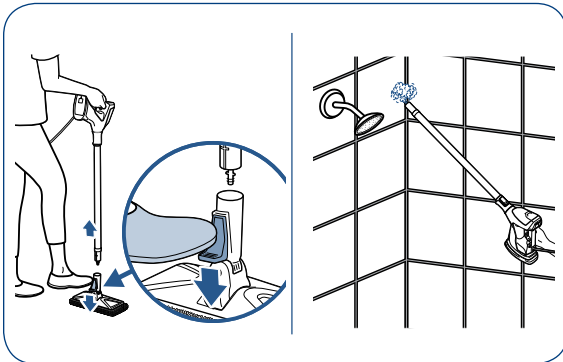
End of Extension Wand and end of Handheld Pod will still be hot after pressing the PAUSE button. Before changing from mopping to the handheld feature or disconnecting a tool from the handheld pod or extension wand, make certain steam is no longer coming from the nozzle or wait until cool before removing.

Getting the Best Clean from Your PowerFresh® Slim Steam

Multi-Surface Cleaning

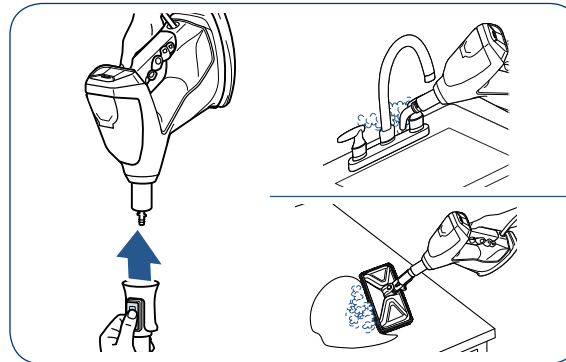
USE THE EXTENSION WAND

To clean hard to reach areas in your home such as baseboards, ceilings, sliding door tracks, etc use the Extension Wand. To use, step down on the pedal located on the back of the steam mop to release from the foot. Push the trigger underneath the handle to release steam.



USE THE HANDHELD POD

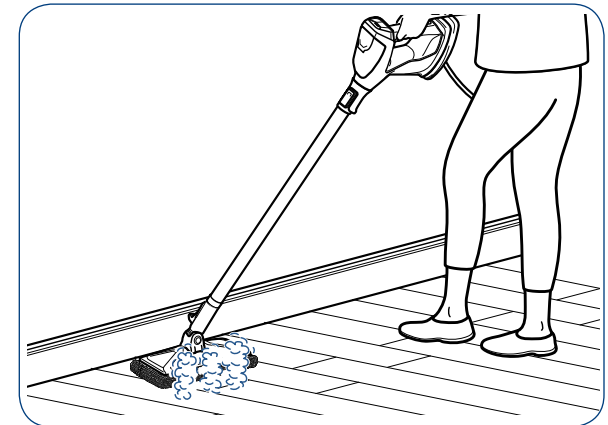
To clean surfaces above your floors such as countertops, sinks, showers, etc use the Handheld Pod. To use, push the release button located on top of the Extension Wand and lift up to detach. Push trigger to release steam. The mop pad foot can also be attached to the Handheld Pod.



Hard to Reach Cleaning

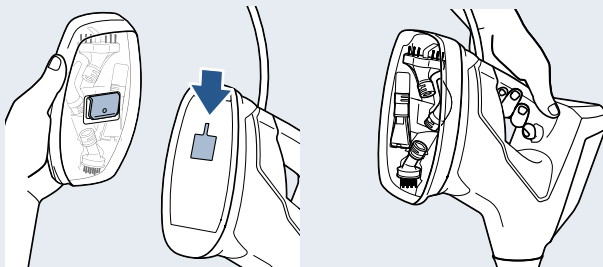
USE SWIVEL STEERING

To clean tight spaces such as baseboards, behind the toilet and around furniture, take advantage of the swivel steering on your PowerFresh Slim Steam Mop.



Carry Tools On The Go

Attach the tool box to the Handheld Pod by aligning the clip on the backside of the Tool Box to the opening on the bottom of the Handheld Pod and slide down into place.



Tips & Tricks

- » Be sure to vacuum or sweep before using your steam mop.
- » Conveniently store your PowerFresh Slim Steam Mop and accessories with the included wall mount and tool box.
- » If the steam seems reduced, make sure there is enough water in the tank. If not, refill the water tank.
- » All tools can be attached to the end of the Extension Wand or the Handheld Pod.
- » For overly challenging and stuck-on messes on hard floors, use the scrubby pad and slowly and evenly stroke your steam mop back and forth at least three times over the area using continuous steam.
- » For best results, wash mop pads after each use.